

**Make doing the washing
more enjoyable**



VAC2
WASH®

VAC2 
WASH®
by
 **sach**®
Air to move

VAC2WASH UNITS

The new VAC2WASH range was created to meet the growing demand for professional and competitive vacuum transport systems for all types of buildings.

We have developed a line of units with varying power levels to provide the right solution for every application.

Each model stands out for its robust construction, quiet operation, and design built to last.

ORIGIN

VAC2WASH ORIGIN is the entry-level model in the range, with capacity for up to **four door ports**. Its compact design combines a glossy white acrylic finish with a powder-coated steel body, ensuring **maximum robustness and long-lasting durability**.

Equipped with a **high-performance motor** and a low-voltage (12V) control connection, it offers **simple, safe installation** and exceptionally **quiet operation**. The front “**fisheye**” viewing window allows users to see the laundry discharge in action, adding a touch of technology, comfort and distinction to any home.



Ref. LJU004-SC

Technical characteristics

Power supply	220-240V / 50Hz
Max. Power	1.200 W
Max. Airflow	1.700 m³/h
Noise level	68 dB(A)
Weight	32 kg
Dimensions	73*48*43 (an*a*p) cm
Ø Air inlet	Ø160 mm
Max n° of ports	4
Furthest port	60m



**Up to 4
door ports**



Auto emptying
for continuous use



**Gloss Acrylic
finish**

ULTRA

VAC2WASH ULTRA is the perfect choice for **larger homes** or installations that require greater airflow capacity.

With up to **eight door ports**, it combines a glossy white finish with a powder-coated steel body, ensuring **maximum durability and refined aesthetics**.

Equipped with a **high-flow brushless turbine**, it delivers **greater power and efficient, quiet performance** – ideal for large villas and premium residences. A perfect balance of technology, power and design.



Ref. LJU005-SC

Technical characteristics

Power supply	220-240V / 50Hz
Max. Power	1.500 W
Max. Airflow	2.500 m³/h
Noise level	68 dB(A)
Weight	40 kg
Dimensions	80*48*48 (an*a*p) cm
Ø Air inlet	Ø160 mm
Max n° of ports	8
Furthest port	90m



**Up to 8
door ports**



Auto emptying
for continuous use



**Gloss Acrylic
finish**

COMMERFLOW

VAC2WASH COMMERFLOW is the **most powerful model** in the range, designed for commercial or large-scale installations that demand maximum performance. Delivering an impressive **airflow of 4,500 m³/h**, it provides outstanding power with stable and quiet operation.

Its powder-coated steel construction ensures **exceptional durability** even in intensive-use environments, making COMMERFLOW the benchmark in automated laundry transport systems.



Ref. LJU006-SC

Technical characteristics

Power supply	220-240V / 50Hz
Max. Power	2.200 W
Max. Airflow	4.500 m³/h
Noise level	68 dB(A)
Weight	48 kg
Dimensions	95*48*49 (an*a*p) cm
Ø Air inlet	Ø200 mm
Max n° of ports	20
Furthest port	120m



**Up to 20
door ports**



Auto emptying
for continuous use



**Gloss Acrylic
finish**

VAC2WASH DOOR PORTS

FLOW



Ref. LJT004-SC

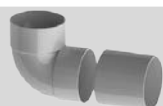
VAC2WASH door port sliding and compact design for any type of home

Technical characteristics

Type of closure _____ Sliding

Weight _____ 0,80 kg

VAC2WASH INSTALLATION MATERIAL



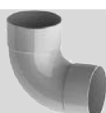
Port 90° Assembly + Sleeve

LJI002-SC



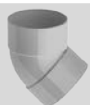
PVC Pipe Ø160 3m

LJI001/3-SC



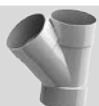
90° Sweep elbow Ø160

LJI006-SC



45° Elbow Ø160

LJI003-SC



45° Single wye Ø160

LJI004-SC



Pipe coupler F-F Ø160

LJI005-SC



Isophonic pipe strap Ø160

LJI010-SC



Signal cable

KAI9043-SC



No more smelly laundry baskets in your bedroom, wardrobe or bathroom.



Works in Multiple or single level homes



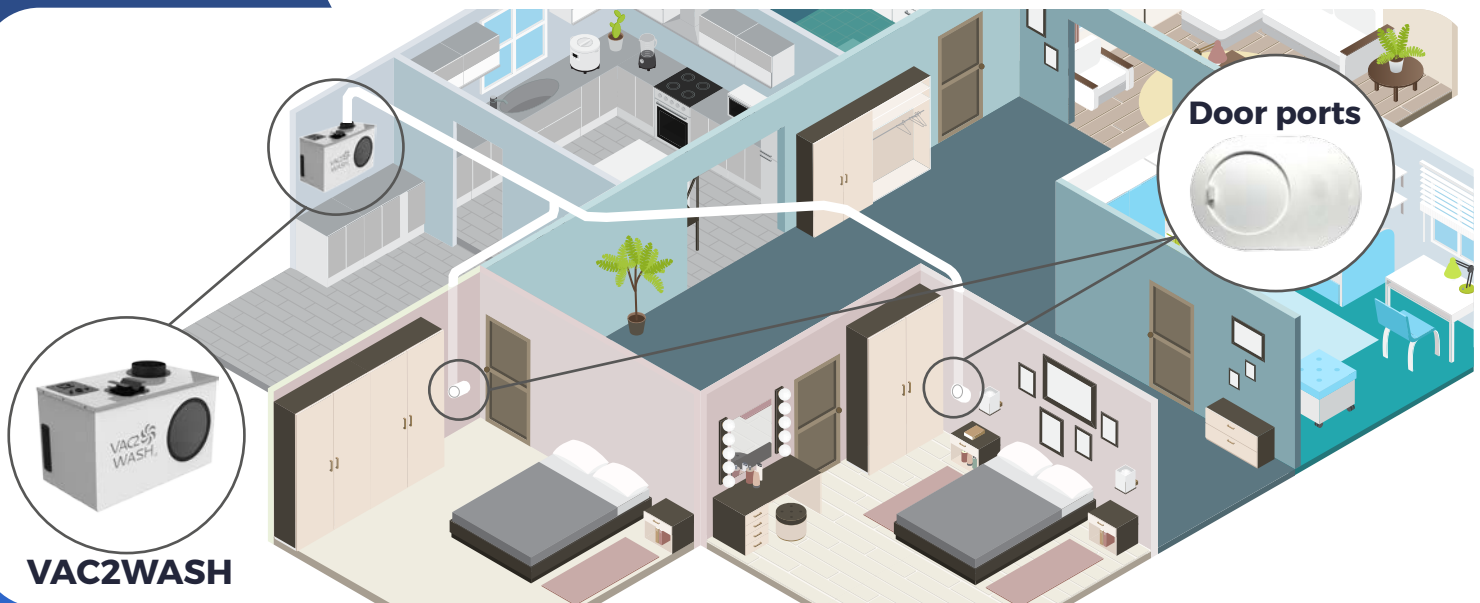
Transports clothes up to 120m



Adaptable for industrial use

How does it work?

VAC2WASH is the **first vacuum powered laundry chute** that transport laundry from any room with door ports installed, to the laundry room. Unlike traditional laundry chute, VAC2WASH can be used regardless of the **type of home**, as it is not reliant solely on gravity to move laundry. Simply open the nearest door port to activate the system. Insert the dirty laundry and it will be automatically transported to the VAC2WASH unit.



VAC2WASH
 **sach**
 Air to move

Sachvac.com

Calle Vereda de los Barros 67
 Pol. Ind. Ventorro del Cano
 28925, Alcorcón, Madrid
 Spain



+34 91 633 34 93
 +34 635 41 49 80



@sachvacuum



@sachvacuum



@sachvacuum



@sachvac